

Coleford

*The Forest of Dean's
cultural & heritage
centre*



Royal Forest of Dean

Welcome to Coleford



Lying towards the Western side of the Forest of Dean, Coleford is the administrative centre of the District. The town centre is a conservation area featuring a number of buildings of historical interest.

There are a number of outstanding attractions in the area, which also has a fascinating history with engineering, iron ore and coalmining at its heart.

Local Attractions

Tourist Information 01594 812388

1. The Forest

Explore the wild, outstanding natural beauty of the countryside all around Coleford. Walk maps include heritage walks of the town. 01594 812388



2. Coleford Clock Tower

The focal point of the town is the impressive clock tower, the only remaining part of the original St. John's Church, demolished in 1882.

3. Hopewell Colliery Museum

A true Forest of Dean Freemine dating from the 1820's located a short distance from Coleford. The museum features a display of old mine working tools typical of this sort of level mine, and a café. 01594 810706



4. Forest House & Whitecliff Furnace

Visit the birthplace of Robert Mushet and the remains of the Dark Hill Works where he perfected the Bessemer Process for manufacturing self-hardening steel. 01594 812388.



5. Clearwell Caves

Mined for iron over two and a half thousand years, Clearwell Caves represent the ancient Forest of Dean tradition of Free Mining. Nine impressive caverns are open to the public. Displays, a tempting tearoom and cave shop stocks minerals, books and other gifts, including pigments still taken from the mine. 01594 832535

6. Puzzle Wood

An area of tranquil woodland walks dating from the 1800's. Explore the fascinating open iron works dating from roman times are set in beautiful surroundings with a maze of paths, bridges and wooden seats. The attraction features a souvenir shop and tea garden. 01594 833187.

7. Symonds Yat Rock

A great beauty spot and popular all year round viewpoint to see the natural river scenery, peregrine falcons and an Iron Age Fort. Very attractive in the spring and autumn months when the tree foliage is at its most colourful. A hand pulled rope ferry leads to a maze, visitor/heritage centre, plus marked walks and river cruises are features not to miss. 01594 812388.

Events & Festivals



Coleford Carnival of Transport

Easter Monday sees this popular one day event is one of the largest in the country. Vehicles of all varieties from bikes to buses and tractors to traction engines are packed into the Town Centre streets.

Organisers encourage exhibitors to dress in the fashion of the era that their vehicle originates. From early morning vehicles assemble from all over the country. Call 01594 812388 for more details. www.colefordtransportshow.co.uk

COLEFORD MUSIC FESTIVAL

On Spring Bank Holiday, Sunday and Monday event that attracts an estimated 20,000 people. Highlights include four music stages with performances from a huge range of international, UK and regional musicians.

The event also features; arts based workshops, street entertainment, stalls, side shows, fair ground rides making it an event for all of the family. Further details can be found on the official website: www.colefordfestival.co.uk



The 2nd Saturday in July sees the four forest towns joining together in a dance spectacular.

Twelve groups ranging from swing to classical and traditional Irish to rock and roll perform in half hour shows on a stage in the centre of the town.

The day starts at 11am with the first set shaking their stuff. Groups travel from the other towns in rotation ensuring the dancing continues right through the day until 5pm.



Be prepared for audience participation at this very popular event. There's no room for shy people!



Starting each year's Christmas festivities, stall holders join together at the Coleford Community Centre for the annual Christmas Market.

The event is usually held on the last Sunday in November. Products include local food, wine and beer, crafts, gifts and floral arrangements. Demonstrations throughout the day.

8. Cinderbury Iron Age Farm

From July '05, an exciting new project, 'Cinderbury' will give the public a chance to have a hands on experience of how life was in the iron age. Located next to Clearwell Caves. 0870 609 3219.

9. Perrygrove Railway

This delightful little railway runs through private grounds on the outskirts of the town, featuring woodland walks and picnic tables. The entrance fee gives unlimited rides on the railway.

This attraction also features an indoor village with secret passageways for children with a unique all-weather Treasure Hunt. 01594 834991



10. Great Western Railway Museum

A museum housed in one of the last permanent railway buildings in the Forest of Dean. It features a miniature passenger electric locomotive with miniature steam loco rides available on some bank holidays. 01594 833569.

11. Golf

Coleford offers two excellent 18 hole courses. Forest Hills (01594 810620) has outstanding views of the side of the town and also features a driving range. The Forest of Dean Golf Club (01594 832583) is a parkland course located just a quarter of a mile from Coleford.

12. Little Follies

If the weather is changeable youngsters can burn off some energy at the superb Little Follies Activity Centre. Open 7 days a week the activity centre boasts a full range of play equipment and a café. 01593 833229.

Food & Drink

Food listings are subject to occasional change.
For the most up to date information please call
the Tourist Information Centre. 01594 812388.

Pubs & Restaurants

Forest House Hotel
Clements End, Coleford
01594 833830

Bells Hotel
Lords Hill, Coleford
01594 832583

The Angel Hotel
Market Place, Coleford
01594 833113

Montague Inn
Clements End, Coleford
01594 833830

The White Hart
6, Market Place, Coleford
01594 835393

The Crown Inn
Parkend Rd, Coalway
01594 836620

The Lamb Inn
The Cross, Clearwell
01594 835441

Gamekeepers Inn
Lower Lane, Five Acres
01594 832283

The Bird in Hand
North Rd, Broadwell
01594 832383

Market Tavern
Market Place, Coleford
01594 837559

The Kings Head Hotel
Bank St, Coleford
01594 833890

The New Inn
Shortstanding, Coleford
01594 836857

The Woodman Inn
Surry Rd, Park End
01594 563273

Pike House Tavern
2, Grove Rd, Berry Hill
01594 835385

Royal Forest Inn
Edge End Rd, Mile End
01594 839473

Dog & Muffler Inn
Joyford, Coleford
01594 832444

Miners Country Inn
Sling
01594 836632

White Horse Inn
Staunton
01594 833387

The Tuffthorn Inn
Station Rd, Milkwall
01594 810820

The Ostrich Inn
Newland, Coleford
01594 833260

The Globe Inn
Park Rd, Berry Hill
01594 810719

The George Inn
High St, St. Briavels
01594 530228

The Fountain Inn
Park End
01594562189

Tudor Farmhouse Hotel
High St, Clearwell
01594 833046

The Butchers Arms
High St, Clearwell
01594 834313

The Balti Hut
29, Gloucester Rd, Coleford
01594 832875

The King of Spain
28, Grove Rd, Berry Hill
01594 834859

Ali Shan Indian Restaurant
12, St. John St, Coleford
01594 834888

Cafés

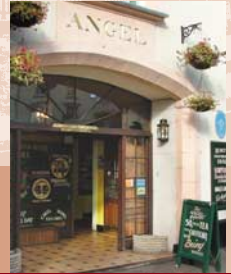
Vicky's
17, St. John St, Coleford
01594 837711

The Log Cabin Shop
Symonds Yat Rock
01594 834479

Puchini's
28, Market Place, Coleford
01594 833445

A & A Cafe
13, Gloucester Rd, Coleford
01594 834789

Chatterbox Cafe
17, Pyart Court, Coleford
01594 811122



Did you know?

In 1643 Coleford was the scene of a battle in the Civil War which included 1500 troops and 500 horsemen.

Originally, Coleford was overshadowed in size by both Clearwell and Newland villages.

Coleford has had two Market Halls, both now gone. The second was in a similar style to the one at Ross-on-Wye.

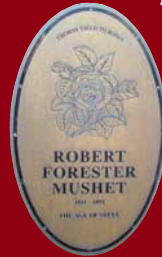
The Clocktower belonged to the original St John's Church which was octagonal in design. The church stood for only 61 years.

The stone cross marks on the market square marks the position of the altar from the original St. John's Church.

Tree felling for charcoal saw most of the original trees from around the town being cleared and the forest receding further up into the hills.

Freeminers are peculiar to this area. Anyone born within the Hundred of St. Briavels who worked in a mine for a year and a day was allowed to open up his own coal mine in the local area.

The abundance of iron ore and a plentiful supply of wood for charcoal saw the area rise in prosperity as the industrial revolution arrived in the 1800s.



Robert Mushet developed the first alloy steel process. Traditionally iron railway rails had to be replaced every 3-6 months but with 'Mushet Steel' their lifespan was extended to over ten years of hard use.

Local solicitor Captain Angus Buchanan VC was shot three times and lost his sight while saving two soldiers during the first world war. He was awarded the Victoria Cross. The gates at the Angus Buchanan Recreation Field carry the design of the Victoria Cross in recognition of his bravery.

Local Map

To
B 422 8



Coleford

Parking in Coleford is FREE

The town's main car park is located off High Street adjacent to the Co-op store.

There are a good number of shops in and around the town offering a wide selection of goods for sale.

Useful Information

Local Information

Tourist Information Centre

High St, Coleford
01594 812388

Coleford Post Office

25 High St, Coleford
01531 820326

Five Acres Leisure Centre

Berry Hill, Coleford
01594 835388

Studio Cinema

High St, Coleford
01594 833331

Local Minibus Service

Lydney Dial a Ride
01594 843809

Coleford Health Centre

Railway Dr, Coleford
01594 598050



Council Information

Coleford Town Council

Town House, Lords Hill, Coleford
01594 832103

Forest of Dean District Council

Council Offices, High Street
Coleford, Glos.
01594 810000

Gloucestershire County Council

Shire Hall, Westgate Street,
Gloucester.
01452 425000
Out of hours 0845 6677788

Emergency Services

Police

Non emergencies
0845 090 1234

Ambulance

Urgent and Stretcher Cases
01452 505050

Fire, Police, Ambulance

Emergency Only Dial 999



School and Childcare

Clearwell C of E County Primary School

01594 834904

Coalway Junior School

01594 810271

Berry Hill Primary School

01594 832262

Royal Forest of Dean College

01594 833416

English Bicknor C of E Primary School

01594 860367

Lakers School

01594 832263

St.John's C of E Primary School

01594 832046

Coalway Community Infant School

01594 833457

Ellwood Primary School

01594 833232

Berry Hill Under 5s Group

01594 810808

Woodlands Nursery

01594 810402

The Rose Day Nursery

01594 835824

Christchurch Nursery School

01594 836192

The open fields around Coleford offer splendid views of the countryside while the town centre offers a range of shops.

